



# Luxury Beachfront Living | Palm Central | Palm Residences

Palm Jebel Ali - Dubai - United Arab Emirates [View in Map](#)

Reference No.**PLS00019**

**NAKHEEL** Developer  
**NAHKEEL**

**Starting From**  
2,500,000 AED

**Payment Plan**  
20/50/30

**Handover From**  
Q3 2029

**Location**  
THE PALM JEBEL ALI FRONDS

**Property Type**  
Apartment | Townhouse |  
Penthouse

**DLD Fee**  
4 %

Download Prosper App



Download on Google Play



Download on the App Store

## Description

Palm Central Private Residences by Nakheel is an exclusive beachfront residential community located on the central spine of **Palm Jebel Ali**, offering a rare combination of luxury, privacy, and resort-style living.

The development comprises **three low-rise buildings** with a stepped architectural design, ensuring that every residence enjoys unobstructed views of the Arabian Gulf, abundant natural light, and a sense of openness rarely found on man-made islands. The project includes a diverse mix of **1 to 5 bedroom apartments, townhouses, and penthouses**, each thoughtfully designed with modern layouts, expansive terraces, and premium finishes to provide a seamless indoor-outdoor living experience. Some townhouses and penthouses also feature **private gardens, sky terraces, or pools**, enhancing the exclusivity and lifestyle appeal of the residences.

Designed as a **resort-style community**, Palm Central Private Residences offers a wide range of amenities for all age groups, including an **infinity-edge pool**, landscaped gardens, children's play areas, fitness and wellness facilities, yoga zones, padel courts, and outdoor dining and leisure spaces. Residents enjoy **direct beach access**, while beautifully landscaped promenades and community spaces foster social interaction and connection with nature. The development is strategically located to take advantage of the growing infrastructure on Palm Jebel Ali, with access to retail, dining, and community hubs along the island's central spine, while maintaining a peaceful, private environment.

With handover expected around **2029** and units starting at approximately **AED 2.5 million**, Palm Central Private Residences is positioned as both a **prime investment opportunity** and



GET IT ON  
Google Play

Download Prosper App

Download on Google Play



Download on the  
App Store

Download on the App Store

a home for those seeking a distinctive island lifestyle. Its combination of modern architecture, premium amenities, and strategic location on Dubai’s ambitious Palm Jebel Ali makes it an ideal choice for families, professionals, and investors looking for a unique blend of luxury, convenience, and tranquility in a rapidly emerging destination.

Amenities

- Swimming Pool
- Gym | Fitness Center
- Kids Play Area
- BBQ Area
- 24/7 Security & CCTV
- High-speed Elevators
- Gardens | Parks
- Jogging | Cycling Track
- Parking
- Clubhouse | Community Center
- Yoga | Pilates Studio
- Spa | Sauna | Steam
- Rooftop Lounge | Terrace
- Supermarket / Store
- Restaurants | Cafés
- Sports Courts
- Beach Access

Payment Plan

Particulars	Period	Booking Amount %	
Down Payment	Immediate	20	

Particulars	Period	Date	Booking Amount %
1st	After Booking	30-04-2026	5

Particulars	Period	Date	Booking Amount %
2nd	After Booking	30-09-2026	5

Particulars	Period	Date	Booking Amount %
-------------	--------	------	------------------

Download Prosper App



Download on Google Play



Download on the App Store

3rd	After Booking	28-02-2027	10
Particulars	Period	Date	Booking Amount %
4th	After Booking	31-07-2027	10
Particulars	Period	Date	Booking Amount %
5th	After Booking	31-12-2027	10
Particulars	Period	Date	Booking Amount %
6th	After Booking	30-04-2028	5
Particulars	Period	Date	Booking Amount %
7th	After Booking	31-08-2028	5
Particulars	Period	Booking Amount %	
8th	On Completion	30	

Regulatory Information

Permit Number	1549251466
DED	771800
RERA	143033
BRN	40659

Trakheesi Permit



Download Prosper App



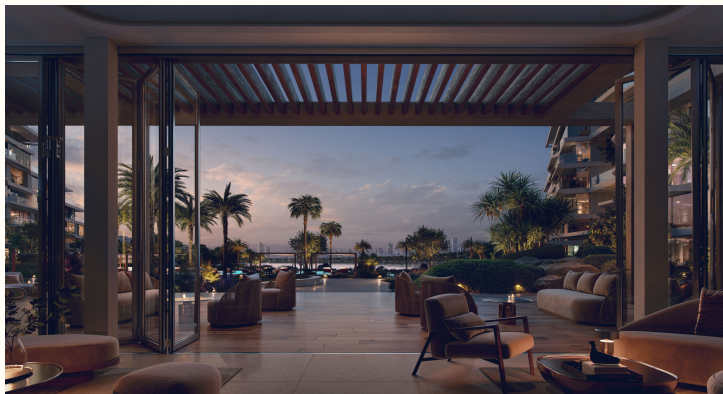
Download on Google Play



Download on the App Store



## Images



### Unit Types

View units which comes under this project.



GET IT ON  
Google Play

Download Prosper App


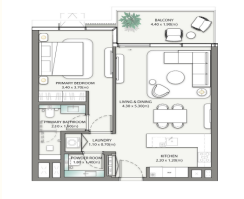



Download on Google Play



Download on the  
App Store

Download on the App Store

Apartment

Type	Bedroom	Area (sqft)	Price (AED)	Floor Plan
1 BEDROOM - TYPE A	1	Built Up: 735 - 810	2,500,000 AED	
1 BEDROOM - TYPE D	1	Built Up: 735 - 810	2,500,000 AED	
2 BEDROOM - TYPE A+	2	Built Up: 1235 - 1300	4,260,000 AED	
2 BEDROOM - TYPE C+B	2	Built Up: 1200 - 1290	5,220,000 AED	
3 BEDROOM - TYPE A+	3	Built Up: 1500 - 1600	7,510,000 AED	

Download Prosper App



Download on Google Play



Download on the App Store

3 BEDROOM - TYPE B+

3

Built Up: 1500 - 1600

7,510,000 AED

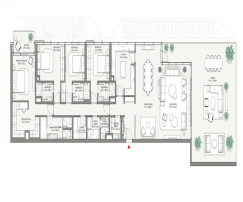


4 BEDROOM - TYPE A

4

Built Up: 4050 - 4100

12,620,000 AED



5 BEDROOM - TYPE A

5

Built Up: 6400 - 6550

17,580,000 AED



Townhouse

Type	Bedroom	Area (sqft)	Price (AED)	Floor Plan
------	---------	-------------	-------------	------------

4 BEDROOM - TOWNHOUSE A

4

Built Up: 3780 - 4025

12,620,000 AED



Penthouse

Type	Bedroom	Area (sqft)	Price (AED)	Floor Plan
------	---------	-------------	-------------	------------

5 BEDROOM - PENTHOUSE

5

Built Up: 9700 - 9800

31,810,000 AED



Download Prosper App



Download on Google Play



Download on the App Store